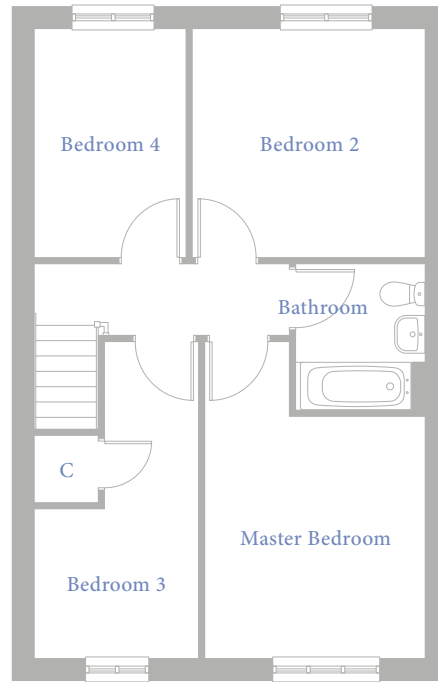
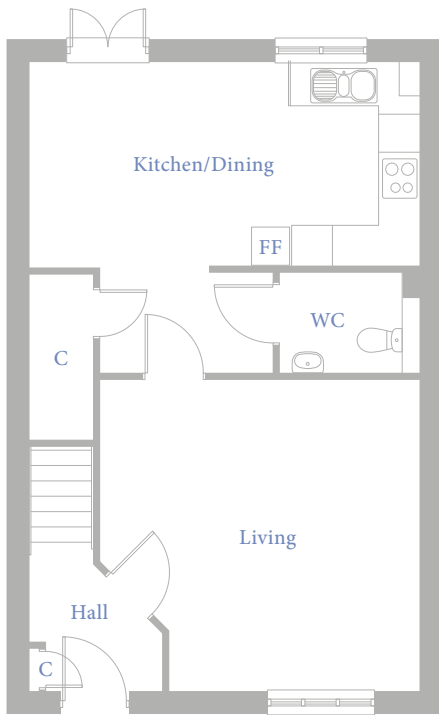


# Four Bedroom House

Plots 151, 152\*

\*Plots are handed



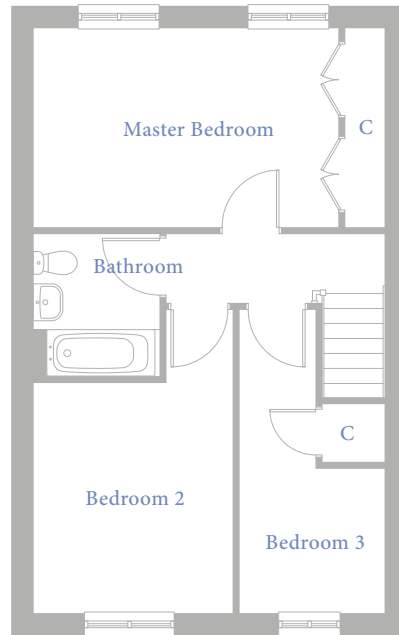
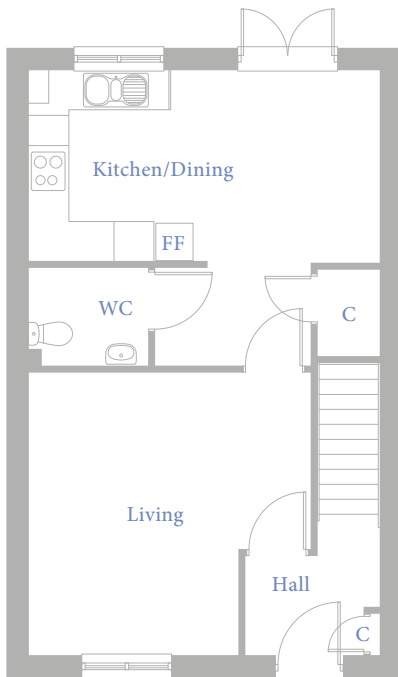
<b>Total Internal Area</b>	<b>107.8 sq m</b>
Kitchen/Dining	5.7 x 3.0m
Living	4.7 x 4.6m
Master Bedroom	3.6 x 3.2m
Bedroom 2	3.4 x 3.4m
Bedroom 3	2.4 x 2.2m
Bedroom 4	3.4 x 2.2m

Energy Efficiency Rating	Environmental Impact (CO <sub>2</sub> ) Rating
<p>Very energy efficient - lower running costs</p> <p>(92 plus) <b>A</b></p> <p>(81-91) <b>B</b></p> <p>(69-80) <b>C</b></p> <p>(55-68) <b>D</b></p> <p>(39-54) <b>E</b></p> <p>(21-38) <b>F</b></p> <p>(1-20) <b>G</b></p> <p>Not energy efficient - higher running costs</p>	<p>Very environmentally friendly - lower CO<sub>2</sub> emissions</p> <p>(92 plus) <b>A</b></p> <p>(81-91) <b>B</b></p> <p>(69-80) <b>C</b></p> <p>(55-68) <b>D</b></p> <p>(39-54) <b>E</b></p> <p>(21-38) <b>F</b></p> <p>(1-20) <b>G</b></p> <p>Not environmentally friendly - higher CO<sub>2</sub> emissions</p>
<b>85</b>	<b>87</b>
<p><b>England &amp; Wales</b></p> <p>EU Directive 2002/91/EC</p>	<p><b>England &amp; Wales</b></p> <p>EU Directive 2002/91/EC</p>

Floorplans shown are indicative only. All room sizes are approximate with maximum dimensions of finished measurements. Measurements have been taken into the kitchen units and are not intended for carpet sizes or items of furniture. Room layouts may be subject to minor modifications. Furniture, kitchen and bathroom layouts shown are indicative only.

# Three Bedroom House

Plot 153



<b>Total Internal Area</b>	<b>94.9 sq m</b>
Kitchen/Dining	5.3 x 2.9m
Living	4.2 x 4.2m
Master Bedroom	4.6 x 3.0m
Bedroom 2	3.5 x 3.0m
Bedroom 3	2.2 x 2.2m

Energy Efficiency Rating	Environmental Impact (CO <sub>2</sub> ) Rating
<p>Very energy efficient - lower running costs</p> <p>(92 plus) <b>A</b></p> <p>(81-91) <b>B</b></p> <p>(69-80) <b>C</b></p> <p>(55-68) <b>D</b></p> <p>(39-54) <b>E</b></p> <p>(21-38) <b>F</b></p> <p>(1-20) <b>G</b></p> <p>Not energy efficient - higher running costs</p>	<p>Very environmentally friendly - lower CO<sub>2</sub> emissions</p> <p>(92 plus) <b>A</b></p> <p>(81-91) <b>B</b></p> <p>(69-80) <b>C</b></p> <p>(55-68) <b>D</b></p> <p>(39-54) <b>E</b></p> <p>(21-38) <b>F</b></p> <p>(1-20) <b>G</b></p> <p>Not environmentally friendly - higher CO<sub>2</sub> emissions</p>
<b>84</b>	<b>86</b>
<p><b>England &amp; Wales</b></p> <p>EU Directive 2002/91/EC</p>	<p><b>England &amp; Wales</b></p> <p>EU Directive 2002/91/EC</p>