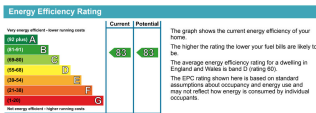
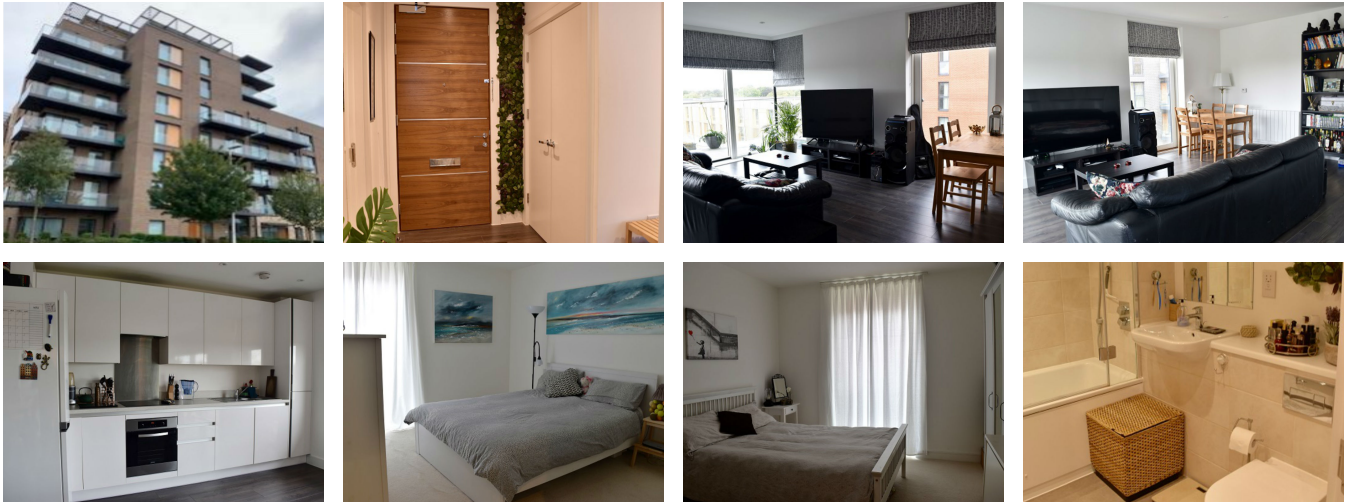


Merlin Court

Handley Drive, Kidbrooke, London, SE3 9BW



Property

Moat is pleased to bring to the market this 2 bedroom apartment located in Kidbrooke Village. The village itself has local amenities including a village store, Sainsbury's Local, David Lloyd's Club, café and delicatessen, pharmacy, information centre and community centre. There is a selection of schools in the area including Wingfield Primary School and Holy Family Catholic Primary School. Kidbrooke train station is approx. half a mile away with services into central London. Kidbrooke has very good connections to the A2 and M25 motorway.

- Entrance hallway
- Open plan lounge / dining area
- Kitchen
- Two bedrooms
- Bathroom
- Gas central heating
- Balcony (accessed via lounge)
- Lease date: 125 years from 1.9.2016
- EPC rating – B (83)
- Council tax band – D
- Pets will not be permitted in apartments.

If you would like more information or would like to arrange a viewing, please contact Gail Hunwick at Moat Homes.

Disclaimer: In accordance with Consumer Protection from Unfair Trading Regulations 2008, these details and photographs have been prepared with due care, however the information contained therein is intended as a preliminary guide only. These particulars do not constitute any part of an offer or contract. Any intending purchaser must satisfy himself/herself by inspection or otherwise as to the correctness of each of the statements contained in these particulars. None of the main services have been tested.

Finance

Status:	Available
Type:	Apartment
Bedrooms:	2
Share price from:	£162,000
Full market value from:	£540,000
Shares available from:	30%
Monthly rent:	£665.87
Service charge:	£349.46
Local authority:	Greenwich
Scheme type:	shared ownership

Property Contact

Name: Gail Hunwick
Tel: 0845 359 6388
Email: gail.hunwick@moat.co.uk